

LIRF/FCO
FIUMICINO

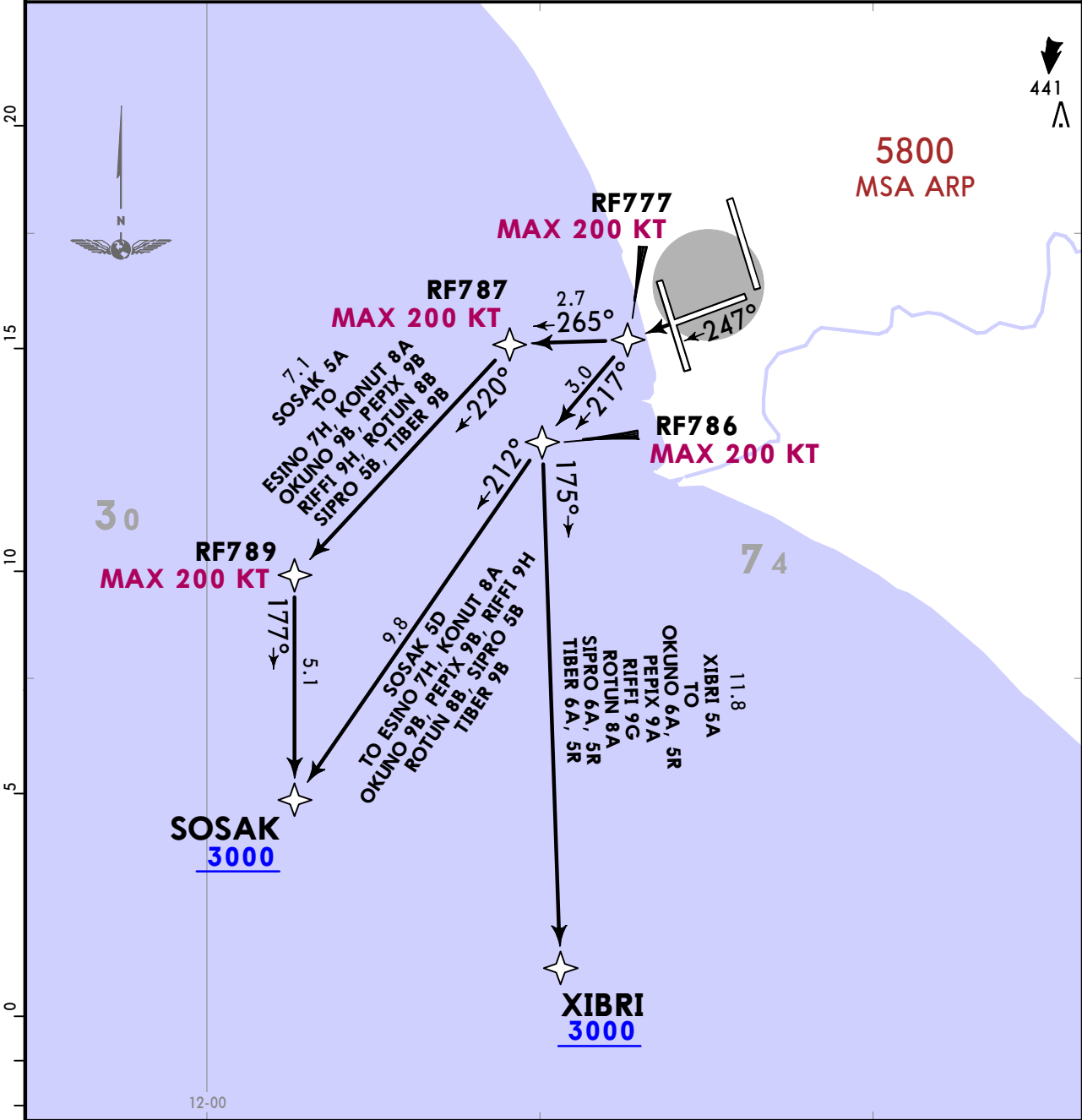
JEPPESSEN
16 FEB 24 10-3C1 Eff 22 Feb

ROME, ITALY
RNAV SID

ROMA Departure (APP) 130.9	Apt Elev 14	Trans alt: 6000
		RNAV 1.
		1. SIDs include noise abatement routings. 2. Non RNAV 1 equipped ACFT shall inform FIUMICINO Tower at start-up. 3. WARNING: Close-in obstacles.

SOSAK 5A [SOSA5A], SOSAK 5D [SOSA5D], XIBRI 5A [XIBR5A]
RNAV INITIAL CLIMB
(RWY 25)

SPEED CONTROL PROCEDURE
MAX 250 KT until crossing FL100
If unable to comply advise ATC when requesting start-up clearance.
ATC removes limitation by the phrase: "NO ATC RESTRICTION ON SPEED"



Suggested minimum climb gradient 7.0% (425 FT/NM) until passing 500.		Gnd speed-KT	75	100	150	200	250	300
		7.0% V/V (fpm)	532	709	1063	1418	1772	2127
SID	INITIAL CLIMB/ROUTING							
SOSAK 5A	(410+) - RF777 (K200-) - RF787 (K200-) - RF789 (K200-) - SOSAK (3000+).							
SOSAK 5D By ATC	(410+) - RF777 (K200-) - RF786 (K200-) - SOSAK (3000+).							
XIBRI 5A	(410+) - RF777 (K200-) - RF786 (K200-) - XIBRI (3000+).							

LIRF/FCO
FIUMICINO

JEPPESEN
30 OCT 20 10-3E Eff 5 Nov

ROME, ITALY
RNAV SID

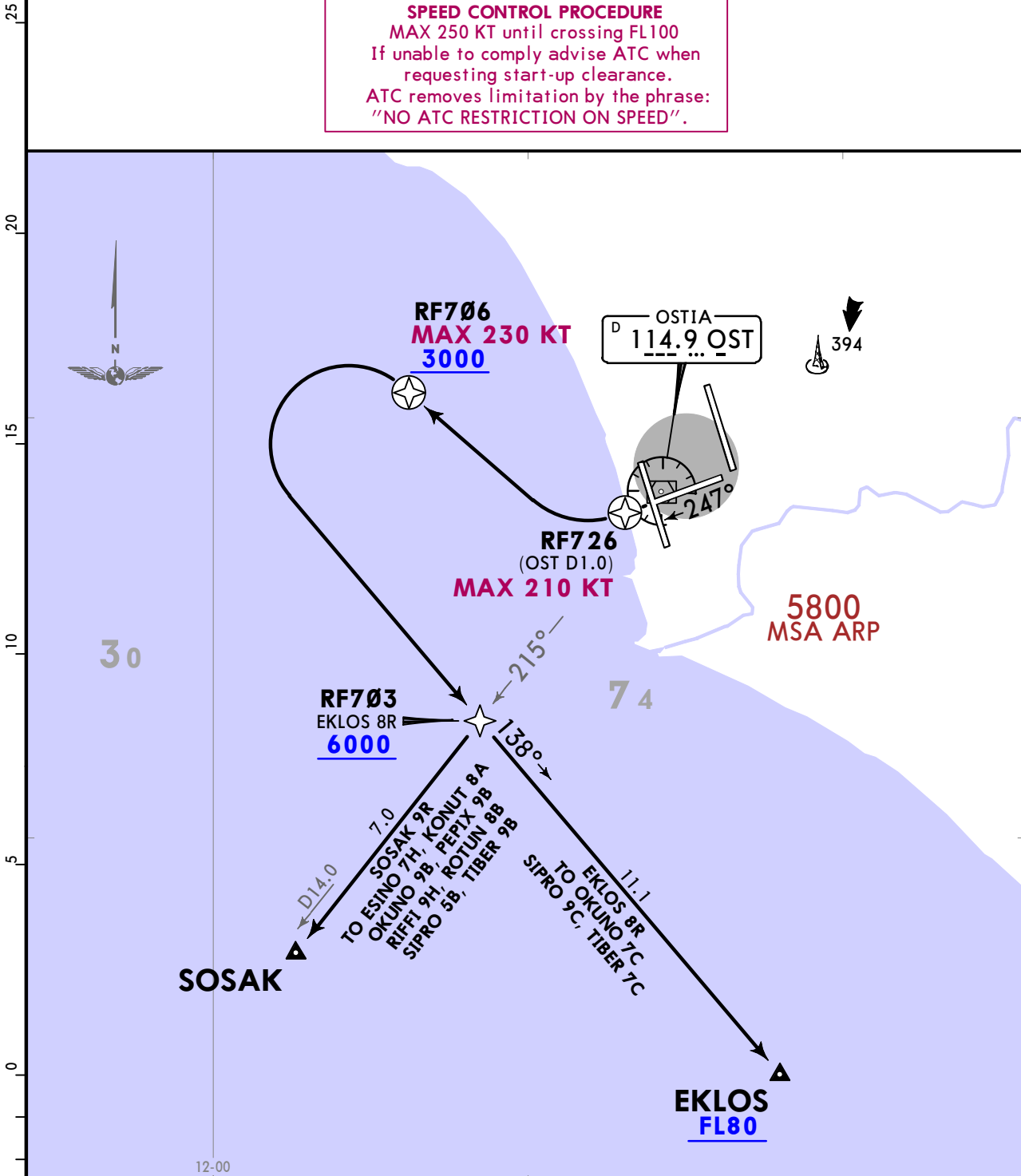
ROMA Departure (APP)
130.9

Apt Elev
14

- Trans alt: 6000
1. RNAV-1.
 2. SIDs include noise abatement routings.
 3. Non RNAV-1 equipped ACFT shall inform Fiumicino Tower at start-up.
 4. EXPECT close-in obstacles.

EKLOS 8R [EKLO8R], SOSAK 9R [SOSA9R]
RWY 25 RNAV INITIAL CLIMB
BY ATC

SPEED CONTROL PROCEDURE
MAX 250 KT until crossing FL100
If unable to comply advise ATC when
requesting start-up clearance.
ATC removes limitation by the phrase:
"NO ATC RESTRICTION ON SPEED".



Suggested minimum climb gradient
410 per NM until passing 500.

Gnd speed-KT	75	100	150	200	250	300
410 per NM	513	683	1025	1367	1708	2050

SID	INITIAL CLIMB/ROUTING
EKLOS 8R	(410+) - RF726 (K210-) - RF706 (K230-; 3000+) - RF703 (6000+) - EKLOS (FL80+).
SOSAK 9R	(410+) - RF726 (K210-) - RF706 (K230-; 3000+) - RF703 - SOSAK.

LIRF/FCO
FIUMICINO

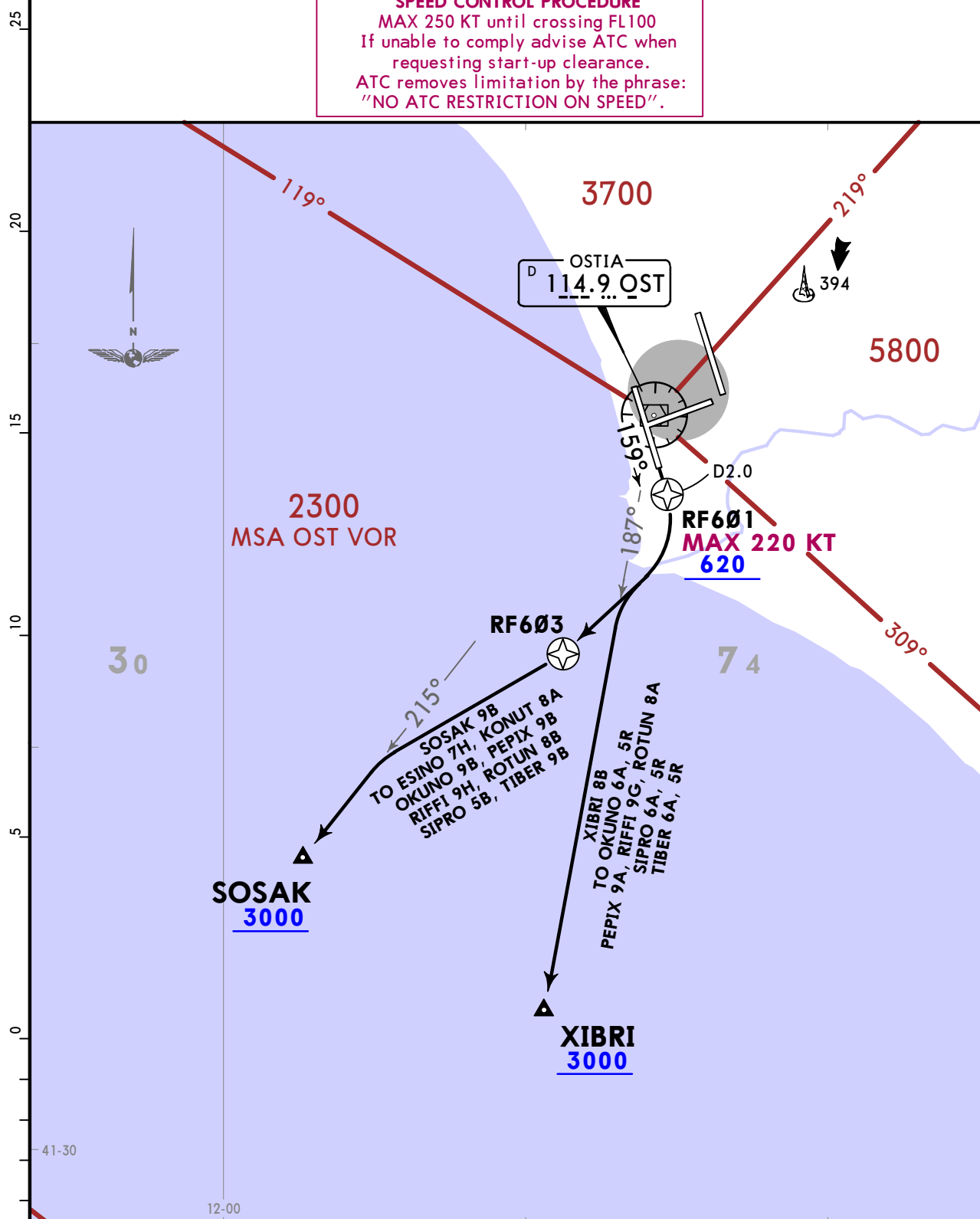
JEPPESSEN
24 JUN 22 (10-3G)

ROME, ITALY

ROMA Departure (APP) 130.9	Apt Elev 14	Trans alt: 6000
		RNAV 1/Conventional. 1. SIDs include noise abatement routings. 2. Non RNAV 1 equipped ACFT shall inform Fiumicino Tower at start-up.

**SOSAK 9B [SOSA9B], XIBRI 8B [XIBR8B]
INITIAL CLIMB PROCEDURES
(RWY 16R)**

SPEED CONTROL PROCEDURE
MAX 250 KT until crossing FL100
If unable to comply advise ATC when
requesting start-up clearance.
ATC removes limitation by the phrase:
"NO ATC RESTRICTION ON SPEED".



SID	INITIAL CLIMB/ROUTING
SOSAK 9B	Climb on runway heading to D2.0 OST, turn RIGHT, intercept OST R215 to SOSAK. RNAV: (410+) - RF601 (K220-;620+) - RF603 - SOSAK (3000+).
XIBRI 8B	Climb on runway heading to D2.0 OST, turn RIGHT, intercept OST R187 to XIBRI. RNAV: (410+) - RF601 (K220-;620+) - XIBRI (3000+).

LIRF/FCO
FIUMICINO

JEPPESSEN
15 MAY 20 **10-3K** **Eff 21 May**

ROME, ITALY
SID

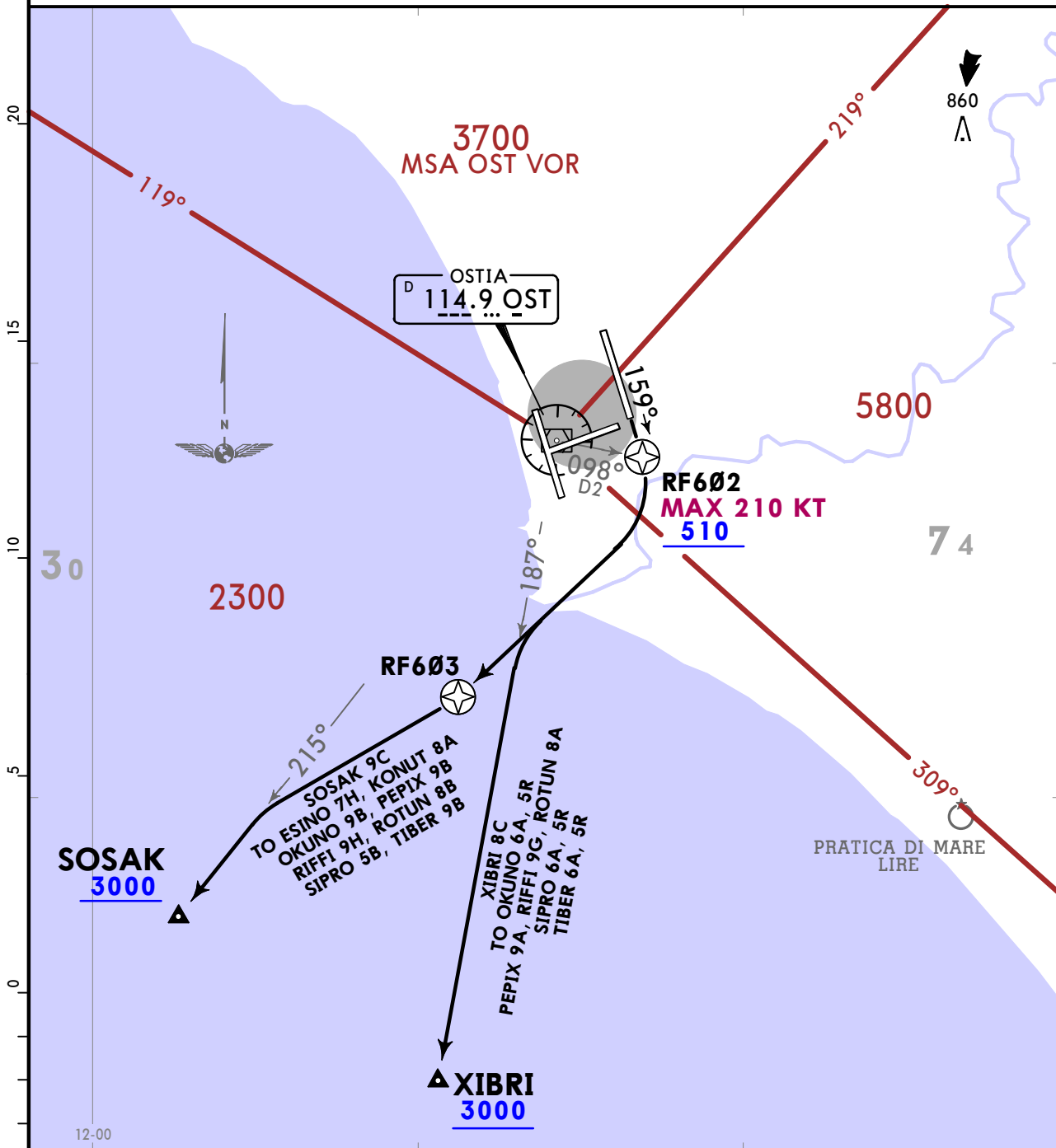
ROMA Departure (APP)
130.9

Apt Elev
14

Trans alt: 6000
1. RNAV-1/Conventional.
2. SIDs include noise abatement routings.
3. Non RNAV-1 equipped ACFT shall inform Fiumicino Tower at start-up.

**SOSAK 9C [SOSA9C], XIBRI 8C [XIBR8C]
RWY 16L INITIAL CLIMB**

SPEED CONTROL PROCEDURE
MAX 250 KT until crossing FL100
If unable to comply advise ATC when
requesting start-up clearance.
ATC removes limitation by the phrase:
"NO ATC RESTRICTION ON SPEED".



SID	INITIAL CLIMB/ROUTING
SOSAK 9C	Climb on runway heading, when passing OST R098, turn RIGHT, intercept OST R215 to SOSAK. RNAV: (410+) - RF602 (K210-;510+) - RF603 - SOSAK (3000+).
XIBRI 8C	Climb on runway heading, when passing OST R098, turn RIGHT, intercept OST R187 to XIBRI. RNAV: (410+) - RF602 (K210-;510+) - XIBRI (3000+).



LIRF/FCO
FIUMICINO

JEPPESEN

ROME, ITALY

30 OCT 20 10-3Q Eff 5 Nov

RNAV SID

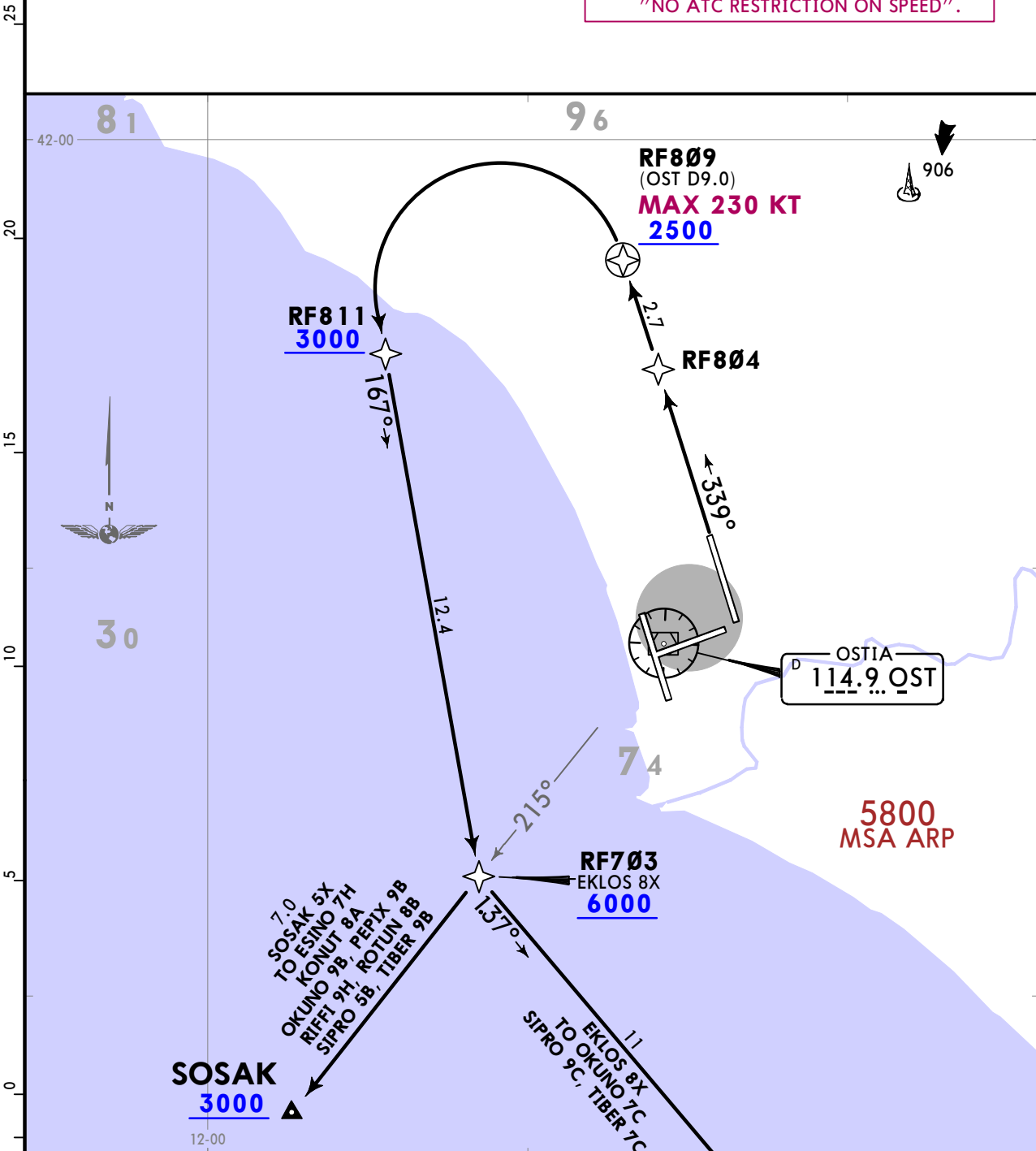
ROMA Departure (APP)
130.9

Apt Elev
14

Trans alt: 6000
1. RNAV-1.
2. SIDs include noise abatement routings.
3. EXPECT close-in obstacles.

EKLOS 8X [EKLO8X]
SOSAK 5X [SOSA5X]
RWY 34R RNAV INITIAL CLIMB

SPEED CONTROL PROCEDURE
MAX 250 KT until crossing FL100
If unable to comply advise ATC when
requesting start-up clearance.
ATC removes limitation by the phrase:
"NO ATC RESTRICTION ON SPEED".



These SIDs require a minimum climb gradient
of
425 per NM (7%) until 3000 due to ATC purposes.

Gnd speed-KT	75	100	150	200	250	300
425 per NM	531	708	1063	1417	1771	2125

If unable to comply advise ATC as soon as possible.

SID	INITIAL CLIMB/ROUTING
EKLOS 8X	(420+) - RF804 - RF809 (K230-; 2500+) - RF811 (3000+) - RF703 (6000+) - EKLOS (FL80+).
SOSAK 5X	(420+) - RF804 - RF809 (K230-; 2500+) - RF811 (3000+) - RF703 - SOSAK (3000+).